

**CYCLONS**  
SPIRAL SEPARATOR HYPERCYCLONS  
FROM Ø 350 TO Ø 1800



**FAST CLIP RINGS**  
Ø 100 - 160 - 210 - 270  
GALVANIZED/AISI 304



ZANIN-13-06-15



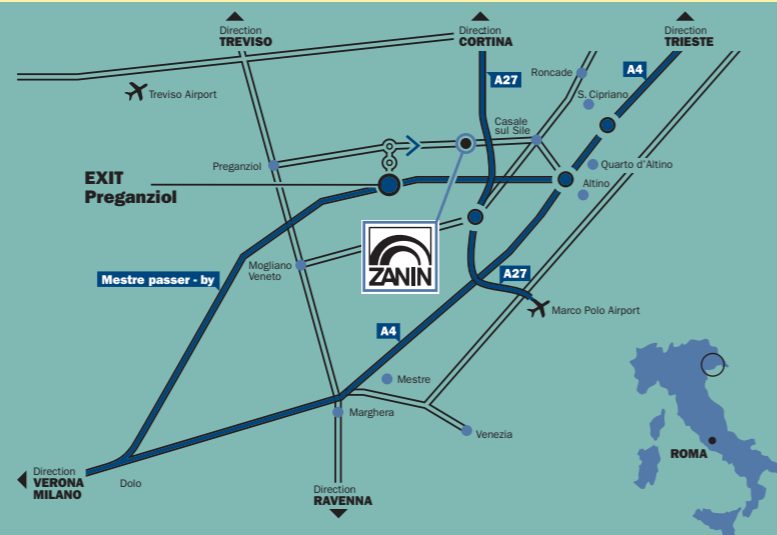
**PNEUMATIC CONVEYOR**



**ZANIN F.lli s.r.l.**  
Viale delle Industrie, 1  
31032 Casale sul Sile (TV) - Italy

T. +39 0422 785444  
F. +39 0422 785805

www.zanin-italia.com  
info@zanin-italia.com



©2015 ZANIN F.LLI - All contents (text, photos, graphic) present in this brochure are propriety of the ZANIN F.LLI company and are protected by the current law. The brochure cannot be published, reproduced, rewritten, distributed, and commercialized without explicit authorization. Brands, denominations and the mentioned companies inside of this brochure are propriety of respective proprietors and are protected by the current law in matter of brands, patents and / or copyright. The company Zanin F.lli disclaims any liability for any inaccuracies in this depliant and reserves the right to make changes to the product as it deems appropriate at any time and without notice.

WARNING: INFORMATION IS NOT BINDING, PLEASE REFER TO THE TECHNICAL DOCUMENTATION RELEASED DIRECTLY BY ZANIN F.LLI

**RESELLER**



**Agro-Industry**



# PNEUMATIC CONVEYOR ON WHEELS

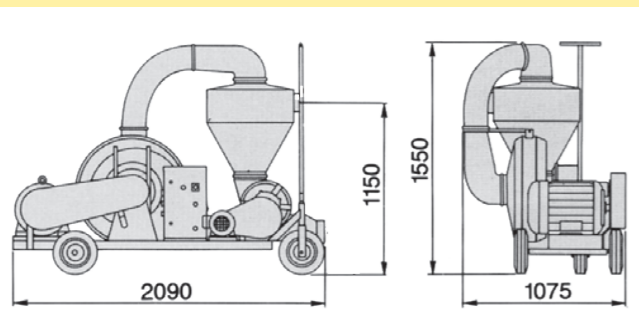
The truck-mounted pneumatic conveyor is a unique solution when a dynamic conveying of the product is necessary and is used everywhere for conveying grain.

## OPERATION

The grain is sucked directly from the floor or from a pit through a system of hoses or fixed pipes. At the fan, the grain is brought above the pipe on the pressure side. Pipes, bends and deviators can be mounted so that the grain can be conveyed to the desired destination.

## FEATURES

- The tractor fed models do not require external electricity
- It is possible to move the product horizontally, vertically and around corners
- it can be used in the fields for loading of the grain
- There are no requirements for the configuration in buildings or in grain pits
- The internal storage of the products protects them from bad weather
- If a greater capacity is needed, the dynamic suction can be replaced by a larger capacity model



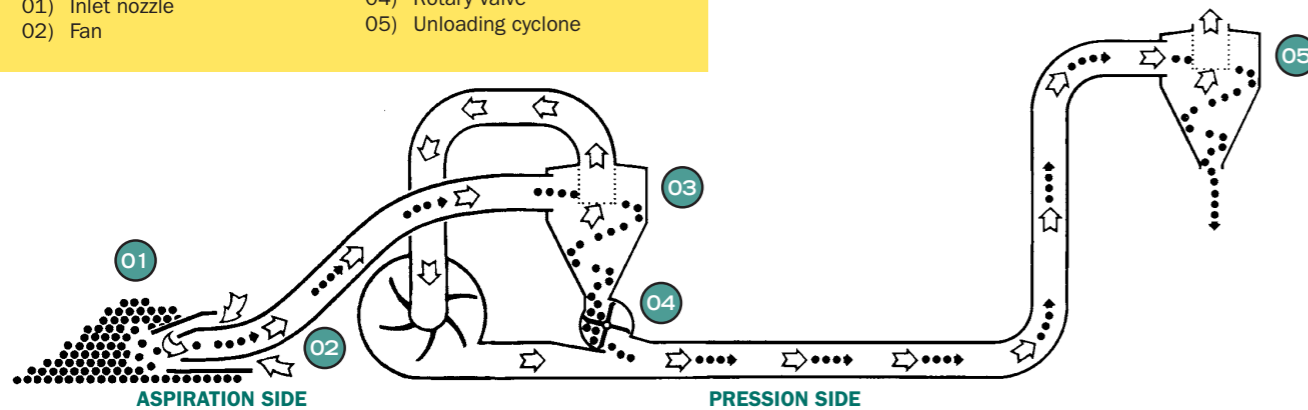
CAPACITY t/h ACCORDING TO TRANSPORT DISTANCE \*

MODEL	VENTILATOR ENGINE POWER kW	VALVE ENGINE POWER kW	ELECTRICAL CONSUMPTION V	WEIGHT ** kg	CAPACITY t/h ACCORDING TO TRANSPORT DISTANCE *														
					10 m	20 m	30 m	40 m	50 m	60 m	80 m	100 m	120 m	150 m	200 m				
100	7,5	0,37	3x 380	145	7,1	6,2	5,4	4,7	4,1	3,6	2,7	2	1,5	0,8	/				
150	11	0,37	3x 380	145	12,1	10,7	9,6	8,6	7,8	7	5,8	4,8	4	3	/				
200	15	0,37	3x 380	145	15,4	13,9	12,5	11,3	10,3	9,4	7,9	6,7	5,8	4,6	3,1				
300	22	1,1	3x 380	278	20,4	18,2	16,4	14,9	13,6	12,5	10,6	9,1	7,9	6,4	4,7				
500	37	1,5	3x 380	378	33,2	30,1	27,4	25,1	23,1	21,4	18,6	16,3	14,4	12,2	9,5				

\* Data calculated for wheat, canola and peas \*\* Weight calculated excluding the engine

## LEGENDA

- 01) Inlet nozzle
- 02) Fan
- 03) Suction cyclone
- 04) Rotary valve
- 05) Unloading cyclone

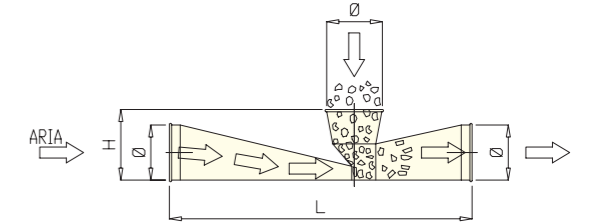


# FIXED PNEUMATIC EXTRACTOR

## INJECTORS Ø 100/160/210



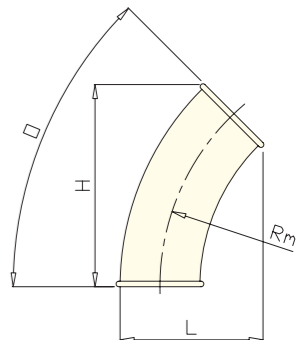
## INJECTOR FOR FEEDER HEAD Ø 100 / Ø 160



## PIPING SYSTEM

### BENDS

CURVE Ø 100 ZINCATE GALVANIZED BENDS				CURVE Ø 160 ZINCATE GALVANIZED BENDS				CURVE Ø 210 ZINCATE GALVANIZED BENDS				CURVE Ø 270 ZINCATE GALVANIZED BENDS			
°	H	L	Rm	°	H	L	Rm	°	H	L	Rm	°	H	L	Rm
15	95	110	300	5	80	175	480	5	np	np	605	15	190	230	615
30	175	140	300	15	145	175	480	15	190	230	605	30	360	285	615
45	250	180	300	30	280	210	480	30	360	285	605	45	510	360	615
60	305	230	300	45	400	280	480	45	510	360	605	60	625	470	615
90	350	350	300	60	485	360	480	60	625	470	605	90	720	720	615
				90	560	560	480	90	720	720	605	90	375	375	200
				90	350	350	240	90	375	375	200				



CURVE Ø 100 INOX STAINLESS STEEL BENDS				CURVE Ø 160 INOX STAINLESS STEEL BENDS				CURVE Ø 210 INOX STAINLESS STEEL BENDS			
°	H	L	Rm	°	H	L	Rm	°	H	L	Rm
15	260	130	500	5	np	np	580	5	np	np	605
30	390	190	500	15	170	180	580	15	190	230	605
45	495	275	500	30	330	225	580	30	360	285	605
60	620	380	500	45	465	310	580	45	510	360	605
90	670	670	500	60	575	410	580	60	625	470	605
90	265	265	215	90	660	660	580	90	720	720	605
90	910	910	800								
90	1110	1110	1000								

### STRAIGHT PIPING

MODEL	Ø mm	LENGHT mm
TD 100	100	1000/2000
TD 160	160	1000/2000
TD 210	210	1000/2000
TD 270	270	1000/2000

\* Size is valid for both galvanized and stainless steel versions

