



ACCESSORIES

- 01) Head with anti-clogging system
- 02) Tail with chain tension device
- 03) Revolutions control device
- 04) Printed chain
- 05) Forged chain
- 06) Recovery buckets and scraping blade
- 07) Chain with nylon blades
- 08) Forged chain
- 09) Printed chain
- 10) Forged chain
- 11) Driving wheel for printed chain
- 12) Driving wheel for forged chain

ZANIN-16-06-15



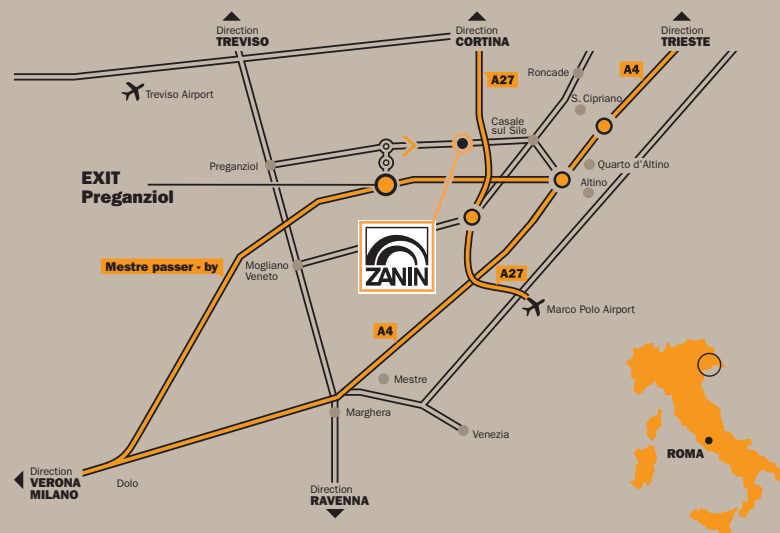
CHAIN CONVEYOR



ZANIN F.lli s.r.l.
Viale delle Industrie, 1
31032 Casale sul Sile (TV) - Italy

T. +39 0422 785444
F. +39 0422 785805

www.zanin-italia.com
info@zanin-italia.com



RESELLER

©2015 ZANIN F.LLI - All contents (text, photos, graphic) present in this brochure are propriety of the ZANIN F.LLI company and are protected by the current law. The brochure cannot be published, reproduced, rewritten, distributed, and commercialized without explicit authorization. Brands, denominations and the mentioned companies inside of this brochure are propriety of respective proprietors and are protected by the current law in matter of brands, patents and / or copyright. The company Zanin F.lli disclaims any liability for any inaccuracies in this depliant and reserves the right to make changes to the product as it deems appropriate at any time and without notice.

WARNING: INFORMATION IS NOT BINDING, PLEASE REFER TO THE TECHNICAL DOCUMENTATION RELEASED DIRECTLY BY ZANIN F.LLI

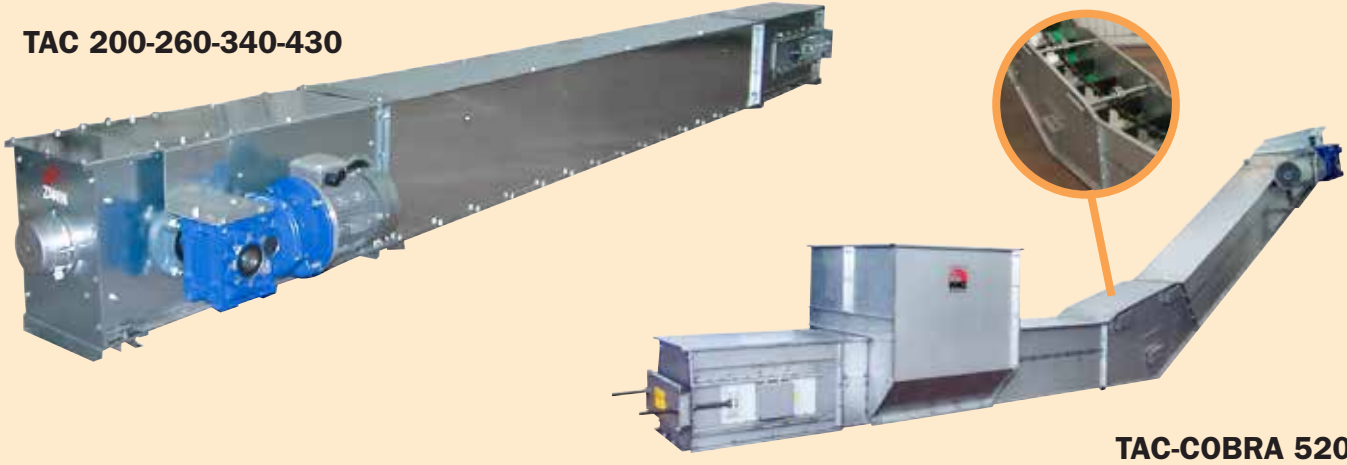




CHAIN CONVEYOR

The chain conveyor is used for the transport of granular products. It is used for the transfer in length of products to be transported into silos, on processing towers, machines and fast loads. It is suitable for all the flowing products, with variable flow rates; it is reliable and airtight.

TAC 200-260-340-430



TAC-COBRA 520

MANUFACTURING

- Head and tail in reinforced galvanized metal sheet “sendzimir”
- Casing built with bolted, galvanized “sendzimir” metal sheet, rectangular section
- Scraping chain built in special steel
- Direct drive gear motor
- Polyethylene chain sliding
- Anti-clogging membrane sensor
- Control hole on head
- Printed chain

OPTIONAL

- Motor with chain drive
- Variator
- Rev. counter inverter
- Loading hopper
- Discharge hopper
- Explosion control panel
- Forged chain
- Anti wear plate
- RAL painting on request
- Hot dip galvanizing process
- INOX steel AISI 304/316

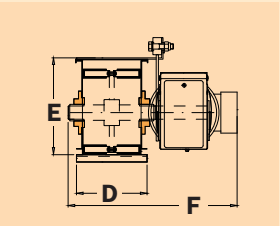
PLANTS

- 01) Loading silos chain conveyor
- 02) Catwalk installation
- 03) Loading pit
- 04) Aerial chain conveyor

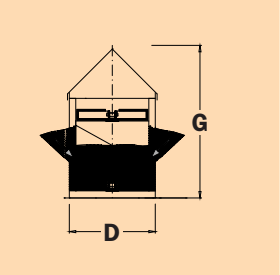
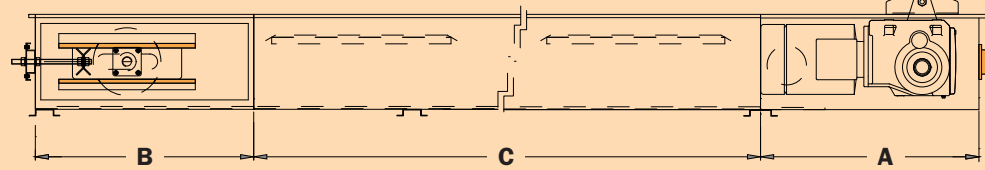


OPERATION

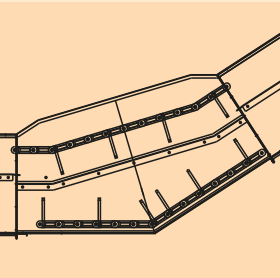
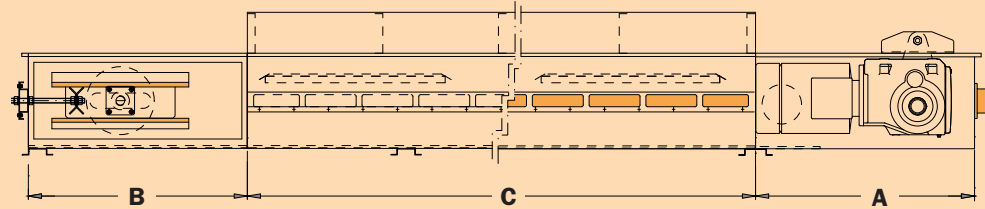
The product enters by gravity, a linear motion of the chain moves the product in the opposite part of the load until it is released in a discharge hopper. The flow rate is given by the speed of the chain.



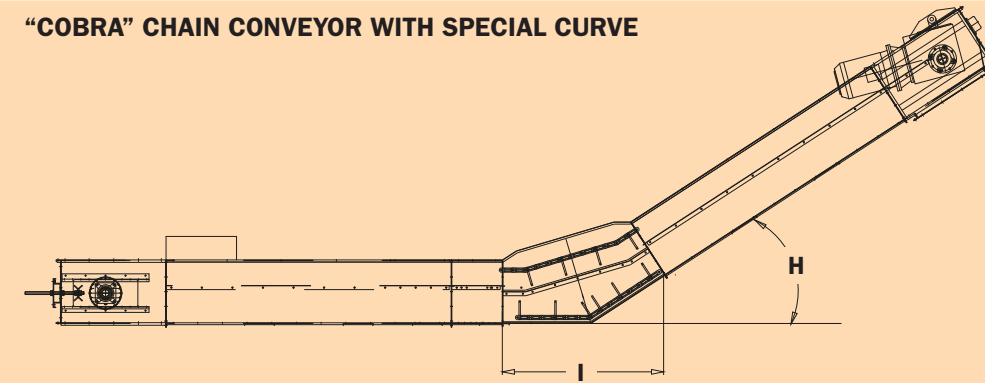
HORIZONTAL CHAIN CONVEYOR



PIT CHAIN CONVEYOR (load on the sides)



“COBRA” CHAIN CONVEYOR WITH SPECIAL CURVE



MODEL	CAPACITY t/h	SPEED m/s	A mm	B mm	C * mm	D mm	E mm	F mm	G mm	H °	I mm
TAC-A 200-50	50	0,4	1000	1000	440 940 1940 2940	260	435	Varies according to the power of the geared motor. Please refer to the data sheets.	600	/	/
TAC-A 260-60	60	0,43	1000	1000	440 940 1940 2940	320	435		650	/	/
TAC-A 260-70	70	0,56	1000	1000	440 940 1940 2940	300	435		700	/	/
TAC-A 340-120	120	0,48	1000	1000	440 940 1940 2940	400	435		700	/	/
TAC-A 340-150	150	0,63	1000	1000	440 940 1940 2940	400	435		720	/	/
TAC-A 430-200	200	0,53	1000	1000	440 940 1940 2940	520	540		740	/	/
TAC-A 520 COBRA	150	0,51	935	935	2940	600	540		/	33 °	1381

N.B.: For conveyors with capacities from 120 to 950 t/h, consult the industrial catalog. Data and calculated with a specific product weight of 0,78 t/m³. The company disclaims any responsibility for the accuracy of the data contained in this brochure and reserves the right to make any changes to its products as deemed necessary.

* The intermediate component may be constructed in four different lengths.