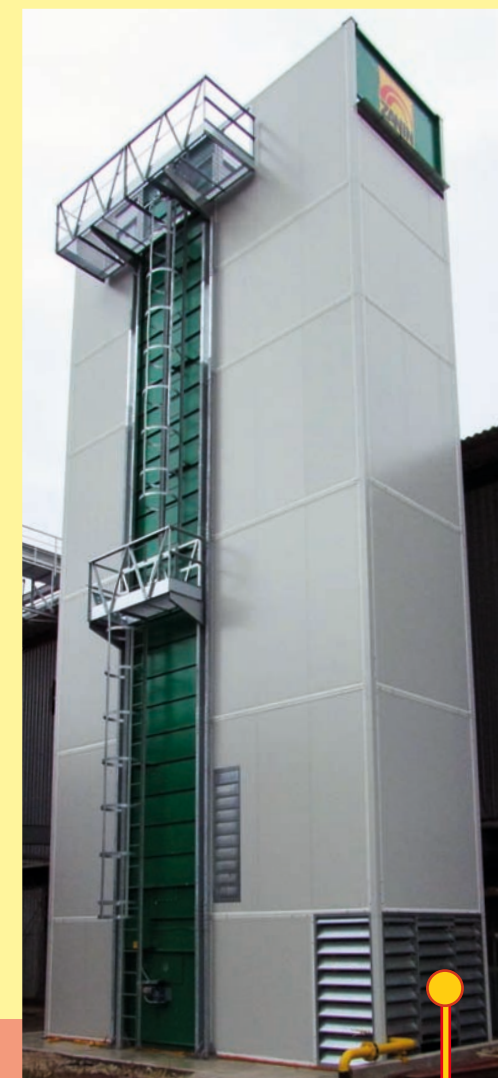


ZANIN-27-10-15



BIOMASS BOILER FOR DRYER

©2014 ZANIN F.LLI - All contents (text, photos, graphic) present in this brochure are propriety of the ZANIN F.LLI company and are protected by the current law. The brochure cannot be published, reproduced, rewritten, distributed and commercialized without explicit authorization. Brands, denominations and the mentioned companies inside of this brochure are propriety of respective proprietors and are protected by the current law in matter of brands, patents and / or copyright. The company Zanin F.Lli disclaims any liability for any inaccuracies in this leaflet and reserves the right to make changes to the product as it deems appropriate at any time and without notice.

WARNING: INFORMATION IS NOT BINDING, PLEASE REFER TO THE TECHNICAL DOCUMENTATION RELEASED DIRECTLY BY ZANIN F.LLI



ZANIN F.Lli s.r.l.
Viale delle Industrie, 1
31032 Casale sul Sile (TV) - Italy

T. +39 0422 785444
F. +39 0422 785805

www.zanin-italia.com
info@zanin-italia.com

RESELLER

C
components



BIOMASS BOILER FOR DRYER

STRAW



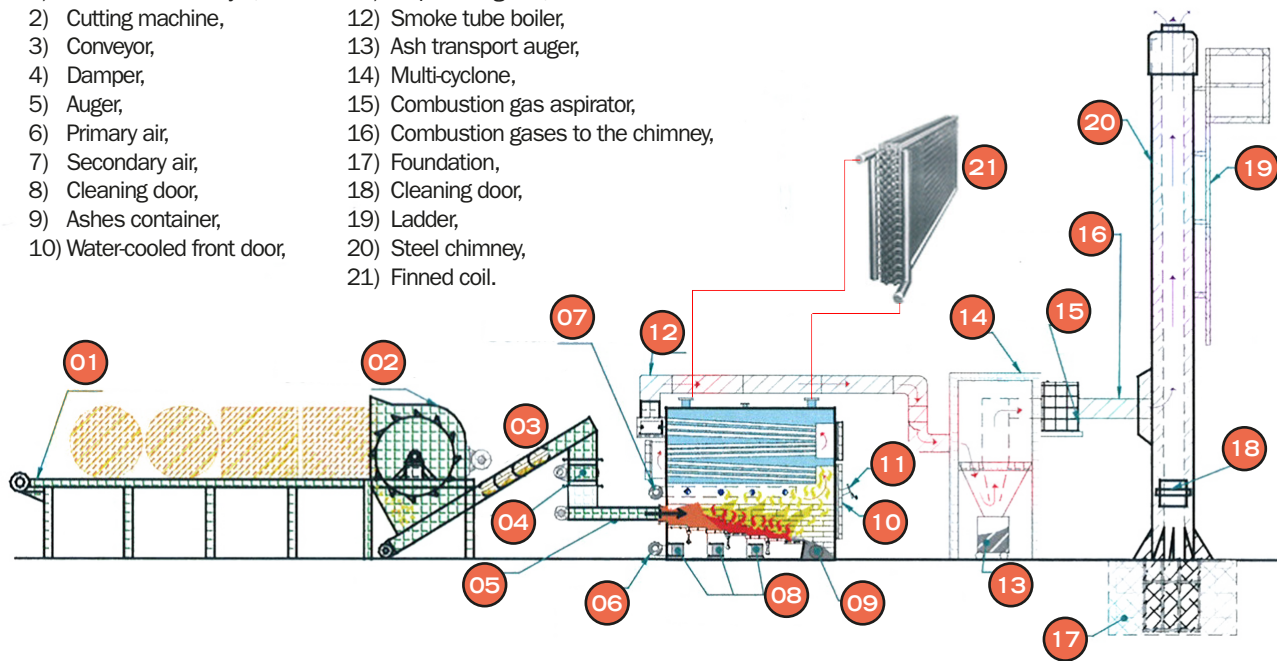
COBS



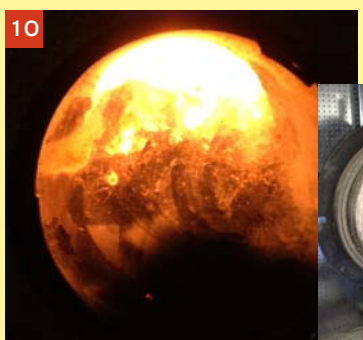
WOODCHIPS



- 1) Straw balls conveyor,
- 2) Cutting machine,
- 3) Conveyor,
- 4) Damper,
- 5) Auger,
- 6) Primary air,
- 7) Secondary air,
- 8) Cleaning door,
- 9) Ashes container,
- 10) Water-cooled front door,
- 11) Inspection glass,
- 12) Smoke tube boiler,
- 13) Ash transport auger,
- 14) Multi-cyclone,
- 15) Combustion gas aspirator,
- 16) Combustion gases to the chimney,
- 17) Foundation,
- 18) Cleaning door,
- 19) Ladder,
- 20) Steel chimney,
- 21) Finned coil.



OPERATION



- 1) Auger feeder,
- 2) Air Jets for pipe cleaning,
- 3) Ash discharge auger,
- 4) Filter,
- 5) Liquid recirculation pumps,
- 6) Control clock,
- 7) Pipeline for liquid transport,
- 8) Touch-screen for control and system monitoring,
- 9) Chain for wooden chips or cobs,
- 10) Fire inspection spyhole.

- 1) Chain for wooden chips and cobs,
- 2) Boiler,
- 3) Chimney,
- 4) Liquid pipe,
- 5) Finned coils,
- 6) Dryer.

