



ZANIN-16-06-15



DETAILS

- 01) Conveyor head
- 02) Conveyor tail
- 03) Loading hopper
- 04) Left hand side manual unloading tripper
- 05) Two-way manual unloading cart
- 06) Three way manual unloading cart
- 07) V shaped rollers and triad rollers
- 08) Traction rollers in rubber and special steel
- 09) Laser sensor for warehouse filling check
- 10) Belt detail with section

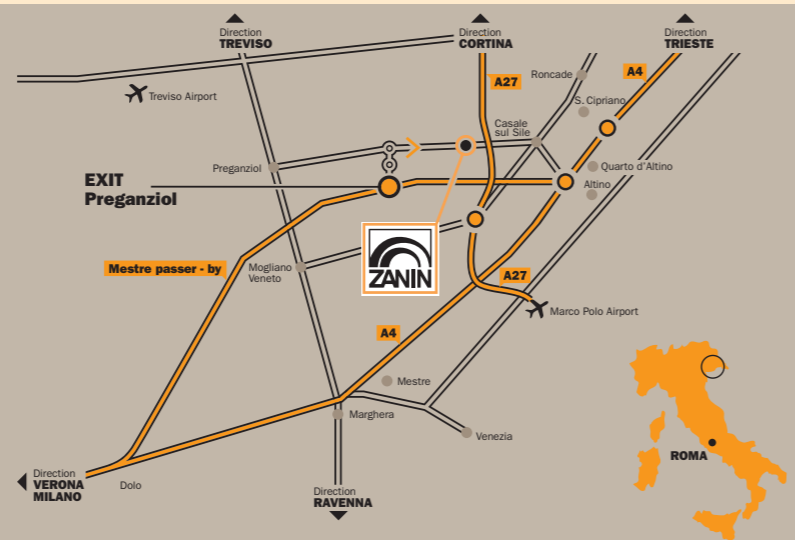


ZANIN
Since 1956

ZANIN F.lli s.r.l.
Viale delle Industrie, 1
31032 Casale sul Sile (TV) - Italy

T. +39 0422 785444
F. +39 0422 785805

www.zanin-italia.com
info@zanin-italia.com



BELT CONVEYOR

©2015 ZANIN F.LLI - All contents (text, photos, graphic) present in this brochure are propriety of the ZANIN F.LLI company and are protected by the current law. The brochure cannot be published, reproduced, rewritten, distributed, and commercialized without explicit authorization. Brands, denominations and the mentioned companies inside of this brochure are propriety of respective proprietors and are protected by the current law in matter of brands, patents and / or copyright. The company Zanin F.lli disclaims any liability for any inaccuracies in this depliant and reserves the right to make changes to the product as it deems appropriate at any time and without notice.

RESELLER

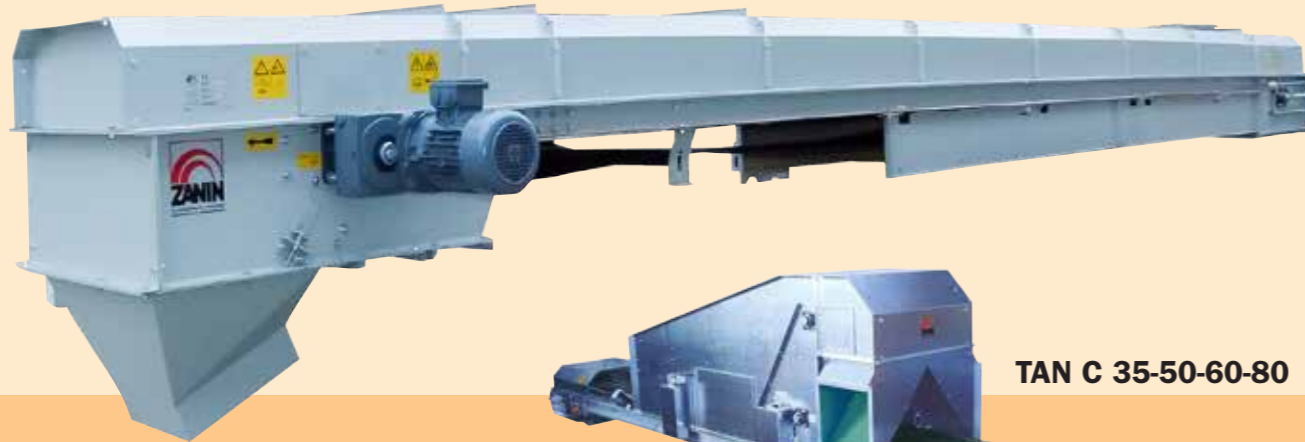


WARNING: INFORMATION IS NOT BINDING, PLEASE REFER TO THE TECHNICAL DOCUMENTATION RELEASED DIRECTLY BY ZANIN F.LLI

BELT CONVEYOR

The belt conveyor is used for the transport of granular products and more. Indicated for the transportation of different products, it avoids pollution by not mixing products. It is used to transfer products in length to stored them in silos or floor warehouses, processing machines, etc, with variable flow rates and considerable lengths.

TAN 35-50-60-80



TAN C 35-50-60-80



CONSTRUCTION

- Head and tail built with reinforced galvanized sheet metal "sendzimir"
- Roll Holders sheet structure in bolted U-section, galvanized "sendzimir" metal
- Belt in rubber with cloth fibers: oil resistant and antistatic
- Closed surface drums
- Rollers made of carbon steel with sealed bearing
- Engine: geared motor
- Product entry hopper



PLANTS

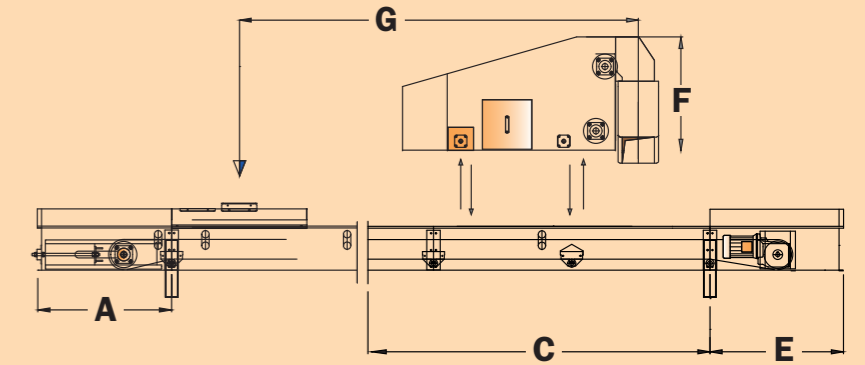
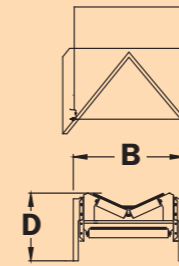
- 01) Outdoor belt conveyor
- 02) Side unloading in warehouse
- 03) Side unloading in cells
- 04) Conveyor with side unloading to shifter belt conveyor
- 05) Belt conveyor for silo unloading



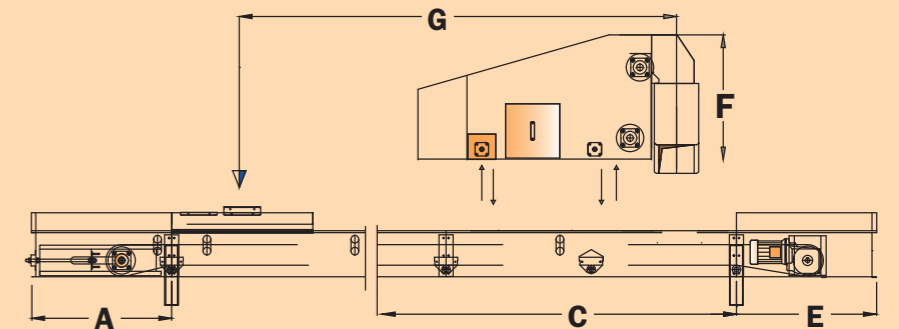
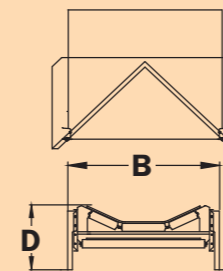
OPERATION

The product enters by gravity, a linear motion of the belt moves the product towards the opposite side of the loading spot and is released in a discharge hopper (optional). The flow rate is given by the belt speed.

TAN 35 - 50 - 60



TAN 80



OPTIONAL

- Motor with chain drive
- Motovariator
- Inverter

- Revolutions counter sensor
- Loading hopper
- Unloading hopper
- Explosion control panels
- Feeding belt

- RAL painting on request
- Hot-dip galvanizing
- Inox steel, AISI 304/316

MODEL	CAPACITY t/h	SPEED m/s	A mm	B mm	C * mm	D mm	E mm	F mm	G mm
TAN-A 35-50	50	2,1	1000	550	500	420	1000	600	> 4000
					1000				
					2000				
					3000				
TAN-A 50-100	100	2	1000	700	500	450	1000	800	> 4000
					1000				
					2000				
					3000				
TAN-A 60-200	200	2,27	1000	850	500	550	1000	800	> 4000
					1000				
					2000				
					3000				
TAN-A 80-300	300	2,54	1000	1050	500	650	1000	1400	> 4000
					1000				
					2000				
					3000				

N.B.: Data and specifics calculated with product specific weight 0,78 t/m³. horizontal transporter, constant product alimentation. The TAN-C versions are equipped with unloading cart. For belt conveyors from 300 to 1000 t/h, please refer to the industrial catalog. The company disclaims any responsibility for the accuracy of the data contained in this brochure and reserves the right to make any changes to the product as it deems necessary.
* The intermediate component can be built in four different lengths.