

ZANIN-26-10-15



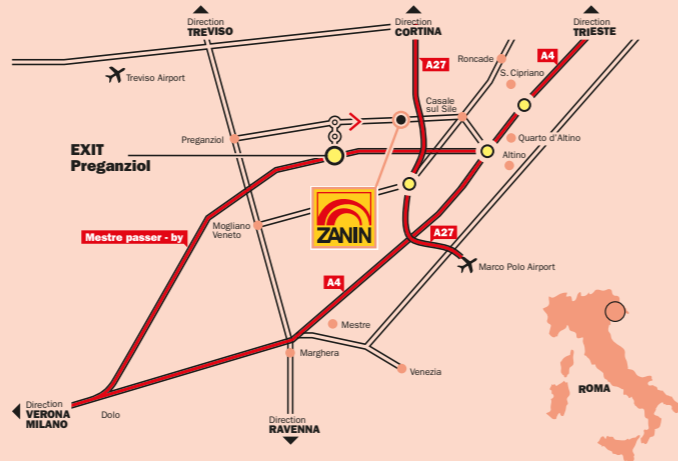
CALORIES GENERATOR DUST BIOMASS



ZANIN F.lli s.r.l.
Viale delle Industrie, 1
31032 Casale sul Sile (TV) - Italy

T. +39 0422 785444
F. +39 0422 785805

www.zanin-italia.com
info@zanin-italia.com



RESELLER

©2014 ZANIN F.LLI - All contents (text, photos, graphic) present in this brochure are propriety of the ZANIN F.LLI company and are protected by the current law. The brochure cannot be published, reproduced, rewritten, distributed, and commercialized without explicit authorization. Brands, denominations and the mentioned companies inside of this brochure are propriety of respective proprietors and are protected by the current law in matter of brands, patents and / or copyright.
The company Zanin F.lli disclaims any liability for any inaccuracies in this depliant and reserves the right to make changes to the product as it deems appropriate at any time and without notice.

WARNING: INFORMATION IS NOT BINDING, PLEASE REFER TO THE TECHNICAL DOCUMENTATION RELEASED DIRECTLY BY ZANIN F.LLI





CALORIES GENERATOR DUST BIOMASS

The thermal energy production system, obtained from plant biomass and by-products of cereal, is the easiest method to use all the waste coming from the handling of the cereal and the like. This system allows for drying of cereals, using the waste of the product itself.

OPERATION

In order to produce thermal energy, the dry biomass is milled with certain properties, this method yields a dust mass (fuel), which is burned in a particular fireplace with controllable temperature. The system includes automatic mill line with disposal of the dust mass (fuel) to the fire station with direct injection, in function of the required temperature. The ventilation system has a direct effect on the fuel chamber thus begins the combustion in the interior of the chamber.

CONSTRUCTION

- The combustion chamber is made of special steel of high quality, in order to achieve a maximum energy potential
- Outside the combustion chamber, a second chamber for the heating vent is installed, connected to the dryer shell
- Barrel for the residual ash, under the combustion chamber, with warm Oil or gas burner type for preheating the combustion chamber, accelerating the warming process for the first activation
- PLC control unit with CE-approved and selected components
- Electrical connections on the machine with high quality selected and tested CE materials

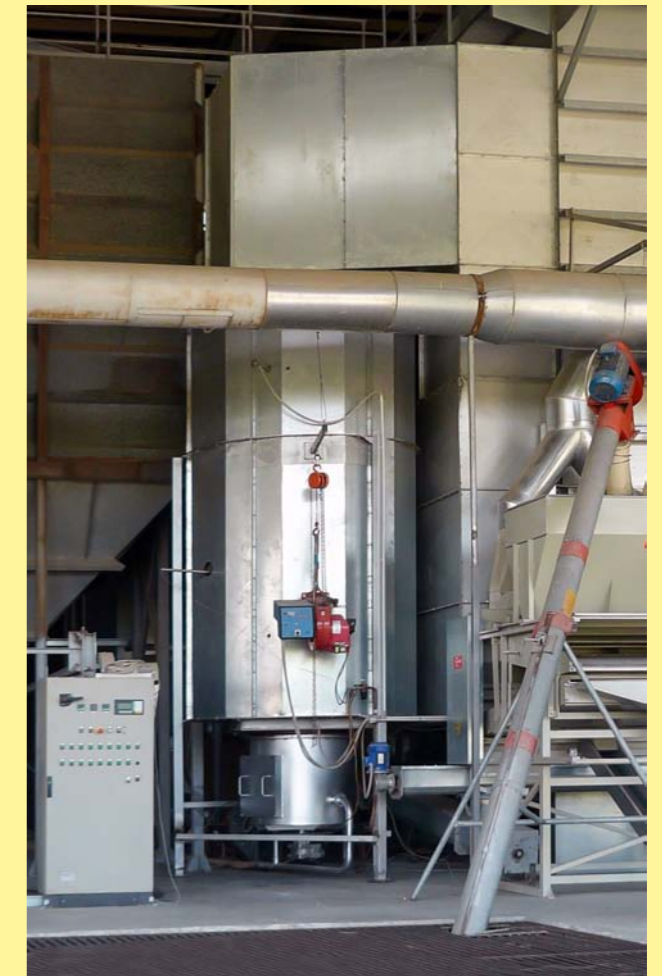
OPTIONAL

- Silo for the product to be milled
- Container to collect the ashes
- Cover for the positioning of the panel



Types of fuel

- Corn - contaminated corn
- Barley
- Soy
- Sunflower
- Paddy
- Rice chaff
- Sleeve of walnuts and hazelnuts
- Etc.



PLANT OPERATION

