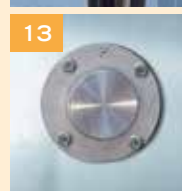
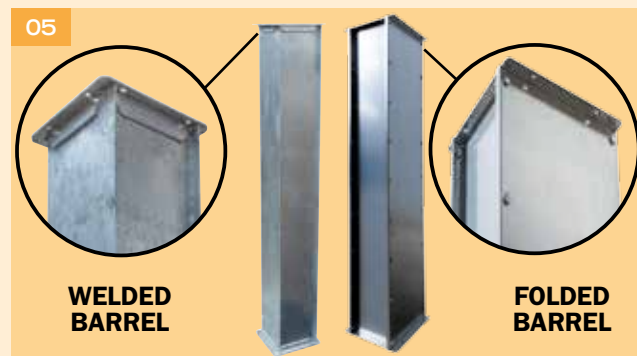




DETTAGLI

- 01) Head with flanged housing
- 02) Elevator foot
- 03) Head with rubberized drum and bench support
- 04) Foot with opened drum
- 05) Elevator barrels (two typologies)
- 06) Nylon buckets
- 07) Carbon steel buckets
- 08) Conduct connection channel
- 09) Auto cleaning system for seeds
- 10) Anti deposit system
- 11) Anti burst panel
- 12) Revolutions control sensor
- 13) Anti-veering sensor
- 14) Magnetic plate on snug

ZANIN-22.04-16



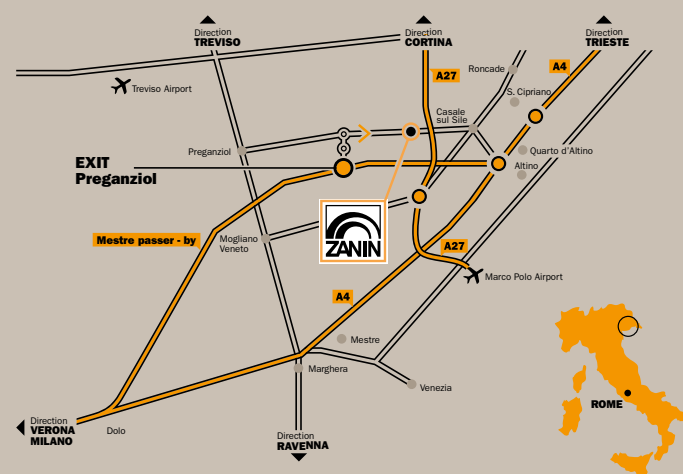
ZANIN
Since 1956



ZANIN F.lli s.r.l.
Viale delle Industrie, 1
31032 Casale sul Sile (TV) - Italy

T. +39 0422 785444
F. +39 0422 785805

www.zanin-italia.com
info@zanin-italia.com



BUCKET ELEVATOR

©2015 ZANIN F.LLI - All contents (text, photos, graphic) present in this brochure are propriety of the ZANIN F.LLI company and are protected by the current law. The brochure cannot be published, reproduced, rewritten, distributed, and commercialized without explicit authorization. Brands, denominations and the mentioned companies inside of this brochure are propriety of respective proprietors and are protected by the current law in matter of brands, patents and / or copyright. The company Zanin F.lli disclaims any liability for any inaccuracies in this depliant and reserves the right to make changes to the product as it deems appropriate at any time and without notice.

WARNING: INFORMATION IS NOT BINDING, PLEASE REFER TO THE TECHNICAL DOCUMENTATION RELEASED DIRECTLY BY ZANIN F.LLI

RESELLER

a
agro-industry

BUCKET ELEVATOR



BUCKET ELEVATOR

The bucket elevator is used for granular products transportation with sliding. It is used for the transfer in height of products to ensile or to be transferred in working towers, process machines, fast loads. It is indicated for all products sensitive to grain breakage.



E-150



E-200/270/340



E-430

MANUFACTURING

- Head and foot in galvanized reinforced sheet “sendzimir”
- Double barrels with rectangular section, built with bolted, galvanized “sendzimir” metal sheet
- Control indicating light barrel and internal maintenance,
- Anti-oil – antistatic rubber and cloth belt
- Carbon steel Buckets and tight small bolts
- Motorization: Gearmotor
- Plate in polyethylene on head revolution
- Product entrance nozzle

OPTIONALS

- Welded Barrel
- Single barrel
- Motor with pulleys transmission
- Moto-variator
- Inverter
- Revolutions control sensor
- Anti-veering sensor
- Unloading hopper
- Anti-burst panels
- Head revolution “Hardox” anti-wear plate
- Entrance snug “Hardox” anti-wear plate
- Additional snug
- RAL painting on request
- Hot galvanizing
- AISI 304/316 stainless steel
- Barrels connection pipe
- Nylon buckets

PLANTS

- 01) Silo loading elevator
- 02) Warehouse loading elevator
- 03) Elevator for drier loading
- 04) Seeds selection plant elevator

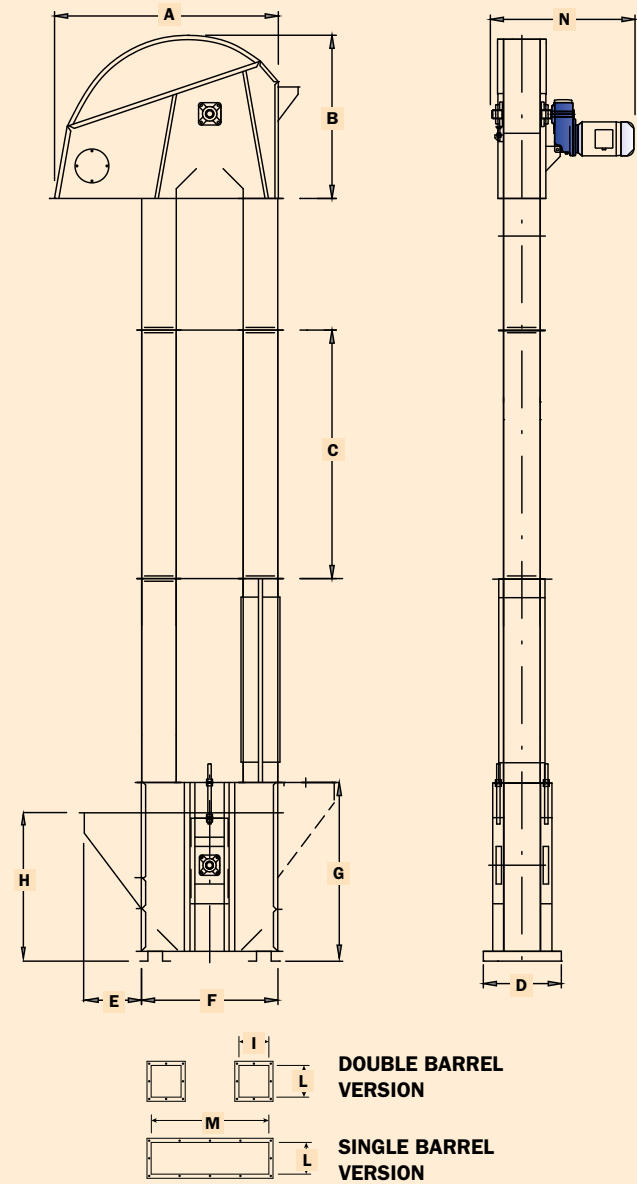


OPERATION

The product enters for gravity in the loading snug, the belt movement with the buckets makes lift the product from the bottom towards top; in the superior part, after the head revolution, the product is released in a unloading hopper (optional). The capacity is given by the belt speed and by the buckets number installed per meter.



SCHEME



MODEL	CAPACITY t/h	SPEED m/s	A mm	B mm	C * mm	D mm	E mm	F mm	G mm	H mm	I mm	L mm	M mm	N
E-A 150-5 M	5	1,96	790	500	1000 1500 2000 3000	295	230	510	785	695	/	150	505	Varies according to the power of the geared motor. Please refer to the data sheets.
E-A 150-10 M	10	1,96	790	500		295	230	510	785	695	/	150	505	
E-A 150-15 M	15	1,96	790	500		295	230	510	785	695	/	150	505	
E-A 200-30	30	3,06	1240	955		415	330	725	950	830	180	195	720	
E-A 200-40	40	3,06	1240	955		415	330	725	950	830	180	195	720	
E-A 200-50	50	3,06	1240	955		415	330	725	950	830	180	195	720	
E-A 270-60	60	2,69	1460	1205		480	340	970	1000	810	225	264	910	
E-A 270-70	70	2,69	1460	1205		480	340	970	1000	810	225	264	910	
E-A 340-120	120	2,87	1745	1200		480	565	1030	1100	1230	280	340	1030	
E-A 430-150	150	2,5	1885	1710		1540	585	1340	1370	1500	309	421	1150	
E-A 430-200	200	3,02	1885	1710		1540	585	1340	1370	1500	309	421	1150	

N.B. For elevators from 120 to 650 t/h see the Industrial catalogue. Data and specifications calculated with a product with S.W. 0,78 t/m³. The company declines every responsibility regarding the data care in this brochure and reserves the right to modify the product as necessary.
* The component can be provided in different lengths.